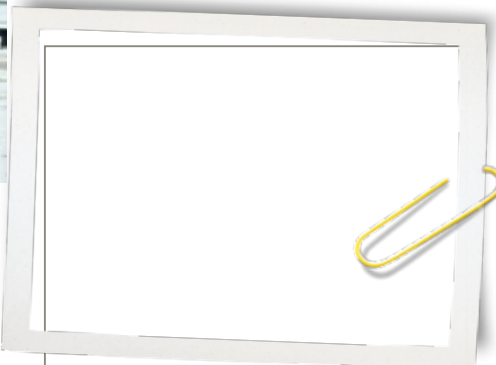




IN DETAIL

ideas from the Molesworth home

Softly does it
It's largely about clever use of colour in Melanie Molesworth's London home – specifically, aubergine shades and cool blues. The palette brings serenity to the interior, with these tones popping up in delicate homeware pieces and vintage furniture. The high ceilings, expansive windows and white walls in the three-storey Edwardian house banish any shadows and gloom, filling the house with a friendly, airy feel. This is a home that successfully melds solid elements, like a dark timber staircase, with fanciful touches, such as the Melanie's amber glassware collection.



INSIDER'S GUIDE TO... LONDON DESIGN FESTIVAL
There's much more than just the Olympics being celebrated in London this year. September sees the London Design Festival offer challenging exhibitions, creative workshops and design tours. Its significant trade show, 100% Design, will offer daring furniture and accessory ranges, while hundreds of smaller events are planned in clusters at various locations. These satellite shows will include the Australian-based Matilda event (above), located around Clerkenwell, displaying works by some of our country's most visionary designers. London Design Festival runs from September 14-23, visit www.londondesignfestival.com.

WORDS & SOURCING BY KERRYN RAMSEY; MAIN PHOTOGRAPHS BY POLLY WREFFORD

purple palette

A passion for purple – from light lilac to deep aubergine – appears in both furniture and homewares in Melanie's house. "My previous place had nothing but neutrals and whites, which I now find rather bland, so adding touches of purple and graphic patterns seemed to give more energy and personality," says Melanie. "It's also a colour that seems to work really well with quite plain neutrals as backdrops."

1. Low Sheen Acrylic in Lounge Lizard, \$41.50 per 1L, from Porter's Paints, contact 1800 656 664, www.porterspains.com.
2. Pascol Living & Bedroom Low Sheen in Muddled Mauve, \$49.90 per 4L, from Masters Home Improvement, contact 1300 337 707, www.masters.com.au.
3. Pure acrylic in Lush, \$39 per 1L, from Murobond. Visit www.murobond.com.au.



spring fever

Fine detail is Melanie's forte, and a perfect example is the floral wallpaper lining her dresser. To create this look, choose your wallpaper and measure the dimensions. Cut the paper to size and use a soft cloth to smooth it into place, working from the centre out. Also, let it dry overnight before you put all the objects back in the cabinet. (In dresser) Zoffany 'Nostell Priory' wallpaper in 06006, POA, from Domestic Textiles Corporation, 1800 177 170. (Above) 'Lorikeet' wallpaper in Neutral printed on Fresco, \$68 per metre, from Sparkk, www.sparkk.com.au. (Below) Clarissa Hulse 'Briar' wallpaper in Spring Green, \$299 per 10-metre roll, from The Selvedge Group, 1300 721 157.



Q&A

London-based interior stylist Melanie Molesworth reveals her passions for colour, collectables and clutter-free homes.

Any tips to avoid clutter in a house?
"Good storage is my rather unoriginal tip for a clutter-free look. It also helps if you marry someone who is tidier! I have a little prop store in the basement where I keep lots of decorative things that I can swap around when I feel like it. I do feel I have to pare things back every now and then. Although I've always been keen on the 'less-is-more' school of thought, I now think it's more a case of careful editing of what you love."

Name your most loved items in the house?
"I love my seaweed picture – put together from a collection of pressed 19th-century specimens found in an antique shop in Kensington Church Street (www.antiques-london.com). I also love my pilgrim-fathers' spoon, given to me by my mother-in-law. (She quickly got the measure of what I love!) Plus, of course, black-and-white pictures."

Favourite vintage boutiques and flea markets? "Although I love Portobello Market (www.portbellomarket.org) and the Lillie Road Antiques in Fulham (www.lillieroad.co.uk), I also love finding those out-of-town markets, like Bridport Antiques (bridportantiques.co.uk) in Dorset or the large outdoor markets, such as Goodwood racecourse in Sussex (www.arunfairs.com).



Your interior covers various eras. How do you make it work harmoniously? "I try not to buy furniture – new or old – unless I have a particular space for it. Scale is important, and I try to imagine how pieces will look together in a room. I don't have any rules, but I like to buy pieces that have an interesting shape or an unusual patina or texture. I like a room with a few layers of history – it makes it feel like a home."
Do you regularly rotate favourite pieces? "Yes, I do move things, usually when I bring something new – or old – home and I need to find a place for it. It helps to keep the house fresh and inspiring. I mess around with things and try to create still-lives with flowers and bits and pieces I've found."

IN DETAIL



LOVE THAT? TRY THIS

↑ OBJECTS The aubergine shelving unit in the kitchen (on page 116) manages to be both functional and fabulous. When Melanie decorated the shelves with new and vintage wares, she chose objects and glassware all in a warm colour spectrum. The designer also selected pieces made from similar materials and patterns.

1. 'Flowers' vase by Anne Black, \$45, from Elevate Design, contact 0413 637 385, www.elevatedesign.com.au. **2.** Dibbern 'Solid Color' hand-blown glass tumbler in green, \$27 for small, from Beclau Homewares, visit www.beclauhomedwares.com.au. **3.** Marimekko 'Socks Rolled Down' pitcher in lilac by Anu Penttinen, \$119, from Safari Living, (03) 9510 4500, www.safariliving.com.

↓ INDUSTRIAL STOOL Melanie has the skill to mix antique furniture with industrial and vintage pieces – here, similar hues and textures come together in harmony. For a similar industrial stool, try Industria X's 'LB' – a poised yet solid seat that can be powdercoated to your colour of your choice. It's the simplicity of line and the sturdy design that make this a great-looking piece, which can be tucked away in the smallest of corners. 'LB' stool in steel and plywood, \$365, from Industria X, visit www.industriax.com.au.





Holmegaard 'Gorgeous' mouth-blown glass vase by Maria Kariis, \$580 for 450mm in Purple, \$815 for 400mm in Smoke, from Cult, 1300 768 626, www.cultdesigned.com.au.

Holmegaard 'Simplicity' sculptural glass objects in transparent Purple or Smoke, \$170, from Cult, 1300 768 626, www.cultdesigned.com.au. **Stelton** 'Simply' glasses in turquoise, pink, blue and yellow by Klaus Rath, \$75 for a set of four, from Cult, 1300 768 626, www.cultdesigned.com.au.

